

2/3/4/5 Megapixel H.265 Motorized Pro Dome Network Camera



IP67 + IK10

Motorized Lens

MS-C2872-(R)F(I)PB/MS-C2972-(R)F(I)PB/
MS-C3772-F(I)PB/MS-C4472-(H)F(I)PB/
MS-C5372-(H)F(I)PB

DATASHEET

KEY FEATURES

- ▶ **Smart Stream** (Bandwidth, storage and bit rate save with Smart Stream ON, eg, H.265+ save 70%~80% bandwidth of H.264.)
- ▶ **Smart IR II** (Combining the High Beam and Low Beam to adjust IR intensity to fit different lighting conditions.)
- ▶ **P-Iris** (Giving you a more clear scene with depth of view.)
- ▶ **Advanced Functions** (Boasting to support various advanced functions such as HLC, Defog, ROI.)
- ▶ **SIP** (Session Initiation Protocol. Providing audio/alarm/intercom and video streaming for mobile phones and video phones.)
- ▶ **128G** (Supporting ultra-large external microSD/SDHC/SDXC card storage up to 128G.)

Video Content Analysis

Milesight VCA with 8 detection modes provides advanced, accurate smart video analysis for Milesight network cameras, enabling the comprehensive surveillance function and quicker response to different monitoring scenes.



0.001Lux Ultra Low-light

The starlight camera is able to deliver high detailed color images even in low light environment reaching 0.001Lux(Color) or 0Lux(B/W), and near infrared light environments without any supplementary lighting.

140dB Super WDR

Milesight's sensor-based WDR technology allows the camera to record greater scene details with true color reproduction even under the extreme back light and high contrast conditions. The ratio that the brightest light signal values divided by the darkest light signal values is up to 140dB.



Clamshell Design

Aiming to reduce the installation troubles to the least, Milesight creatively introduces the clamshell design to the dome base. This revolutionary innovation enlarges the space to make cable connection a piece of cake, greatly saving efforts for installers.

H.265 Motorized Pro Dome Network Camera

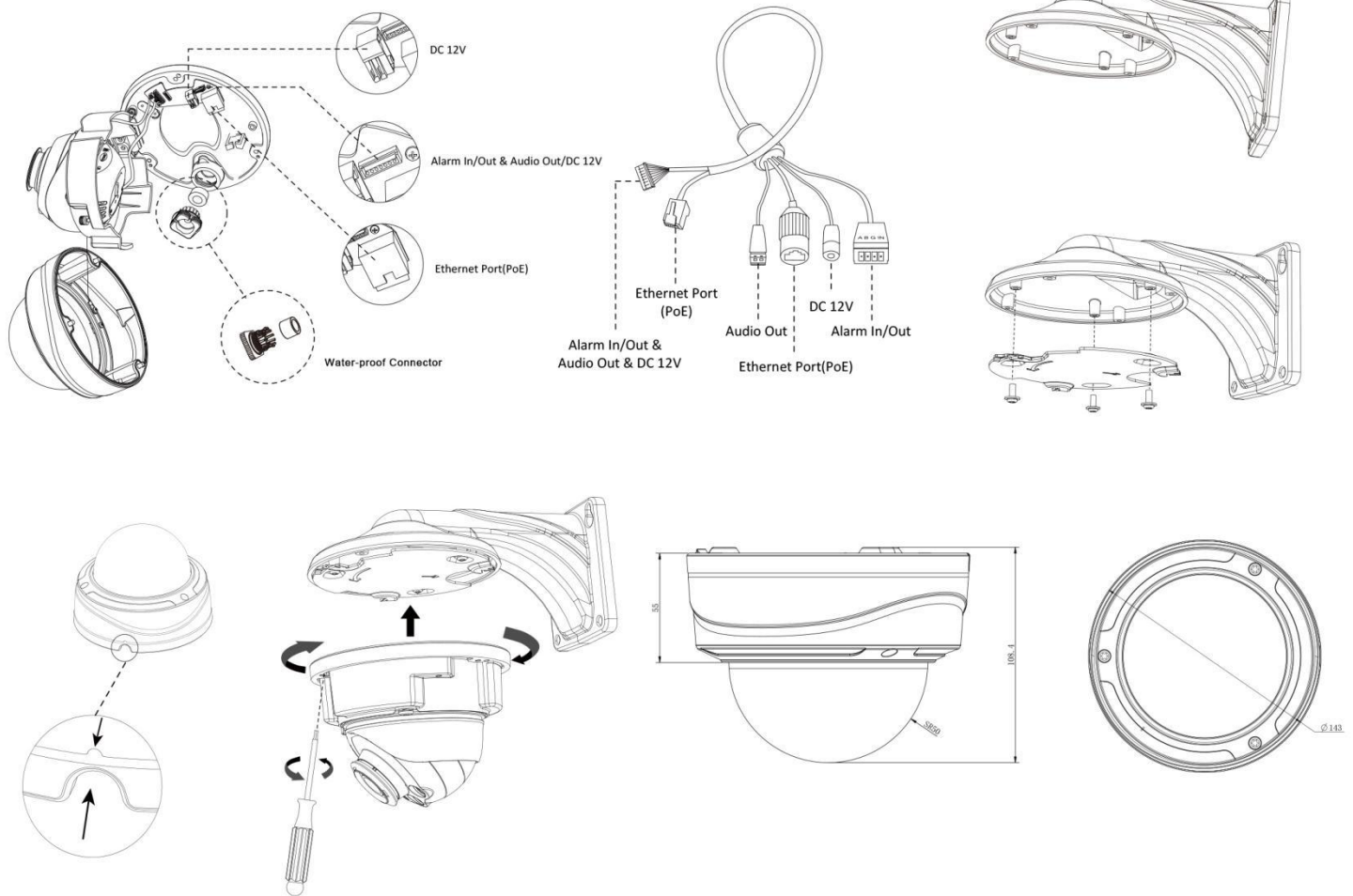


| | Model | MS-C2872-(R)F(I)PB (2MP) | MS-C2972-(R)F(I)PB (2MP) | MS-C3772-F(I)PB (3MP) | MS-C4472-(H)F(I)PB (4MP) | MS-C5372-(H)F(I)PB (5MP) |
|----------------------|---------------------------|--|--|--|--|---|
| Camera | Image Sensor | 1/2" Progressive Scan CMOS | 1/2.8" Progressive Scan CMOS | | 1/3" Progressive Scan CMOS | 1/2.8" Progressive Scan CMOS |
| | Min. Illumination | Color: 0.001Lux@F1.2 B/W: 0Lux with IR on | Color: 0.002Lux@F1.2 B/W: 0Lux with IR on | Color: 0.005Lux@F1.2 B/W: 0Lux with IR on | Color: 0.008Lux@F1.2 B/W: 0Lux with IR on | Color: 0.005Lux@F1.2 B/W: 0Lux with IR on |
| | WDR | Super WDR up to 140dB | | Super WDR up to 120dB | | |
| | Lens | Motorized 3.6~10mm @F1.4 P-Iris(Optional) | Motorized 3.0~10.5mm/2.8~12mm/7~22mm @F1.4 P-Iris(Optional) | | | |
| | Mount | Ø14 | | | | |
| | Field of View | H96°~H42°/ D111°~D48°/ V55°~V23° | H93°~H33°/D107°~D38° /V52°~V18° (3.0~10.5m) H91°~H34°/D105°~D39° /V51°~V19° (2.8~12mm) H40°~H16°/D46°~D19° /V23°~V9° (7~22mm) | H84°~H30°/D105°~D37° /V63°~V22°(3.0~10.5mm) H79°~H31°/D98°~D38° /V59°~V23° (2.8~12mm) H38°~H15°/D51°~D19° /V28°~V11° (7~22mm) | H85°~H30°/D99°~D35° /V48°~V17°(3.0~10.5mm) H76°~H31°/D88°~D36° /V45°~V18° (2.8~12mm) H36°~H15°/D41°~D17° /V22°~V8° (7~22mm) | H90°~H31°/D114°~D38° /V67°~V23°(3.0~10.5mm) H87°~H31°/D110°~D39° /V65°~V24° (2.8~12mm) H37°~H15°/D47°~D19° /V28°~V11° (7~22mm) |
| | Shutter Time | 1/100000s~1s | | | | |
| | IR Distance | Up to 50m(3.0~10.5mm)/ 80m(7~22mm) | | | | |
| | Day&Night | ICR Filter Auto Switch | | | | |
| Video | Max. Image Resolution | 1920×1080 | | 2048×1536 | 2592×1520 | 2560×1920 |
| | Primary Stream | 60fps@(1920×1080)(Optional), 30fps@(1920×1080, 1280×960, 1280×720, 704×576) | | 30fps@(2048×1536, 1920×1080, 1280×960, 1280×720, 704×576) | 30fps@(2592×1520), 20fps@(2592×1520), 30fps@(2304×1296, 1920×1080, 1280×960, 1280×720, 704×576) | 30fps@(2560×1920, 2592×1520)(Optional), 20fps@(2560×1920, 2592×1520), 30fps@(2304×1296, 1920×1080, 1280×960, 1280×720, 704×576) |
| | Secondary Stream | 30fps@(704×576, 640×480, 640×360, 352×288, 320×240, 320×192, 320×176) | | | | |
| | Tertiary Stream | 30fps@(1920×1080, 1280×720, 704×576, 640×480, 640×360, 320×240, 320×192, 320×176) | | | | |
| | Video Compression | H.265+/H.265(HEVC)/H.264+/H.264/MJPEG | | | | |
| | Video Bit Rate | 16Kbps~16Mbps(CBR/VBR Adjustable) | | | | |
| | Image Setting | Brightness/Contrast/Saturation/Sharpness | | | | |
| Network | Ethernet | 1*RJ45 10M/100M Ethernet Port | | | | |
| | Network Storage | NAS(Support NFS, SMB/CIFS) | | | | |
| | Protocol | IPv4/IPv6, TCP, UDP, RTP, RTSP, RTCP, HTTP, HTTPS, DNS, DDNS, DHCP, FTP, NTP, SMTP, SNMP, UPnP, SIP, PPPoE, VLAN, 802.1x, QoS, IGMP, ICMP, SSL | | | | |
| Audio | Audio Compression | G.711/AAC | | | | |
| | Audio I/O | Built-in Microphone and 1 Audio Output interface | | | | |
| System | Alarm I/O | 1/1 | | | | |
| | Storage | Support microSD/SDHC/SDXC Card Local Storage, up to 128G | | | | |
| | Advanced Function | Motion Detection, Privacy Masking, Backlight Compensation, HLC, 2D DNR, 3D DNR, ROI, Anti-fog, White Balance | | | | |
| | SIP/VoIP Support | Yes, Voice & Video-over-IP | | | | |
| | Event Trigger | Motion Detection, Network Disconnection, Audio Alarm, External Input, etc. | | | | |
| | Event Action | FTP Upload/ SMTP Upload/ SD Card Record/ External Output/ SIP Phone | | | | |
| | Video Analysis (Optional) | Region Entrance, Region Exiting, Advanced Motion Detection, Tamper Detection, Line Crossing, Loitering, Human Detection, People Counting | | | | |
| System Compatibility | ONVIF Profile S & G | | | | | |
| General | Working Temperature | -40℃~60℃ | | | | |
| | Working Humidity | 0~90%(Non-condensing) | | | | |
| | Power Supply | PoE (802.3af)/ DC 12V±10% | | | | |
| | Power Consumption | 8W MAX 12W MAX (With IR on) | | | | |
| | Weather Proof | Up to IP67-rated for Weather-resistant Performance | | | | |
| | Housing | Vandal-proof IK10-rated Metal Housing | | | | |
| | Weight | 1100g | | | | |
| | Dimensions | Ø143mmX108.4mm | | | | |
| | Warranty | 3/5 Years | | | | |

H.265 Motorized Pro Dome Network Camera



Structure Diagrams



Units: mm

Accessories Support

A01 Pole Mount

Weight: 720g
Dimensions: 170*51.5*152.6mm



A02 Internal Corner Bracket

Weight: 540g
Dimensions: 170*23.2*205.3mm



A03 External Corner Bracket

Weight: 900g
Dimensions: 170*152.6*76.3mm



A72 Wall Mount

Weight: 350g
Dimensions: 106*140*214mm



AC-72 Smoked Dome Cover

For concealing where a camera is pointed



A75 Junction Box

Weight: 200g
Dimensions: 155.5*167*33.5mm



Naming Convention



Milesight Technology Co.,Ltd. | www.milesight.com

Contact Us: sales@milesight.com support@milesight.com



Add: 7509 N.W. 36th Street, Miami, Florida 33166, USA
Tel: +1-800-561-0485

Add: 9F/901, Star Valley B/D Digital-ro 9gil 99, Geumcheon-gu, Seoul, Korea
Tel: +82-2-839-3335

Add: No.23 Wanghai Road, 2nd Software Park, Xiamen, China
Tel: +86-592-5922772