



Instruction of Flexible Installation Modes

Various Accessories satisfy Different Installation Requirements

A Milesight Technology Moment

Introduction

Milesight 360° Panoramic Fisheye Network Camera, the panoramic camera, is born to bring superb user-experience especially featuring ultra high resolution up to 12MP. With exquisite design and customer-oriented idea, the camera fits for different installations like ceiling & wall and maximizes the convenience, achieving hassle-free installation and integrated cable management.



Four Different Installation Modes for Different Needs

Considering different requirements from customers for specific installation environments, the Fisheye Camera accesses to four different installation modes. The Fisheye Camera with the bracket (Picture 1) is the basic installation mode. Also, Milesight offers A75 (Picture 2) and A76 (Picture 3) for convenient cables management and ceiling or vertical structure. For wall or parapet installation, A72 (Picture 4) is available.



Fisheye camera
(Picture 1)



A75 Junction Box
(Picture 2)



A76 Pendent Mount
(Picture 3)



A72 Wall Mount
(Picture 4)

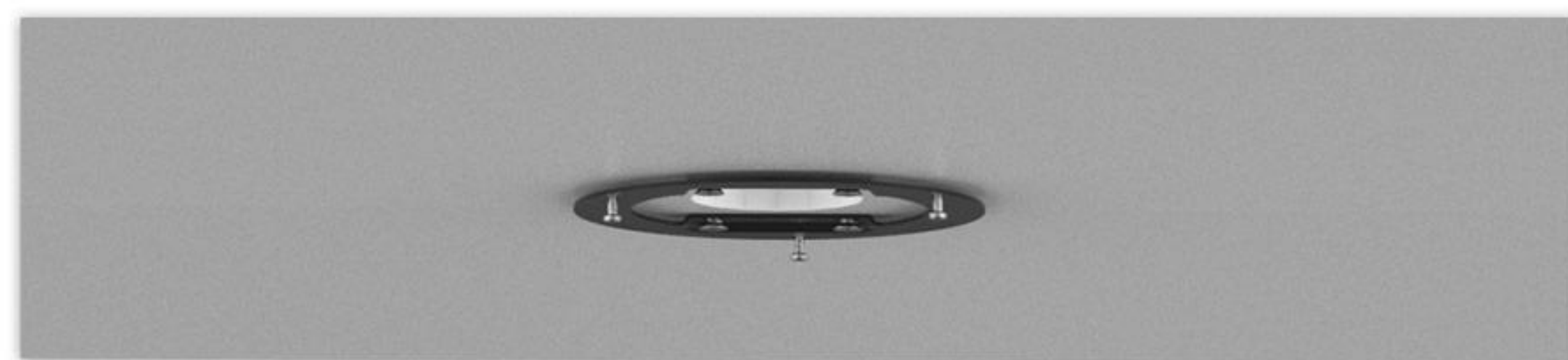
Installed with Mounting Bracket



Step 1: Turn the top cover anticlockwise and take it off;



Step 2: Fix the bracket on ceiling or wall where the camera is intended to be installed. Then secure the screws;



Step 3: Connect cables, rotate the camera to the bracket clockwise;



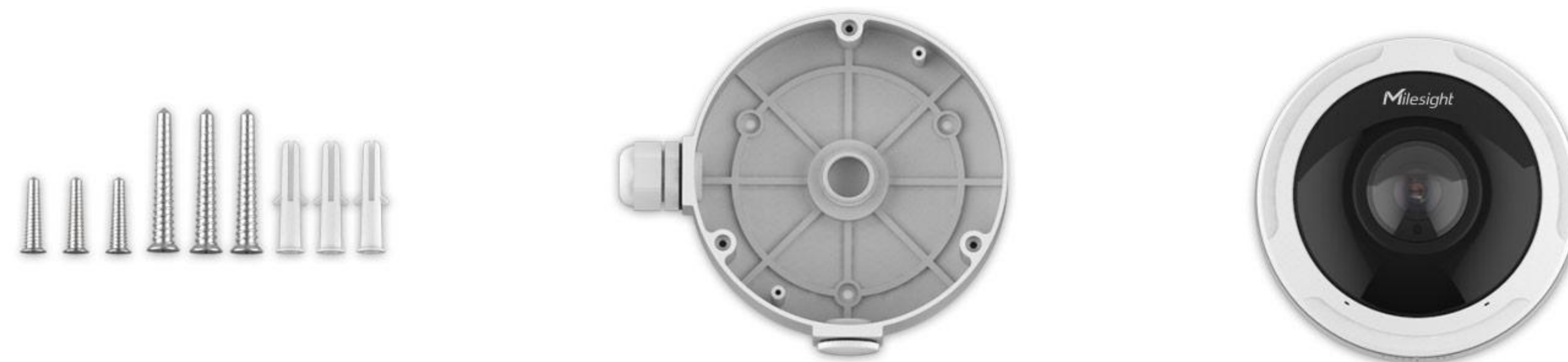
Step 4: Tighten the set screw. Then turn the top cover clockwise till the anchor points are aligned.



Installed with A75 Junction Box

Installation Environment:

For the containing of electrical connections which need to be concealed from sight and deter tampering.



Step 1: Turn the top cover anticlockwise and take it off;



Step 2: Fix junction box in the position where the camera is intended to be installed;



Step 3: Put the cables through the rubber plug side or the hole centric to connect them;



Step 4: Secure the camera on the junction box;



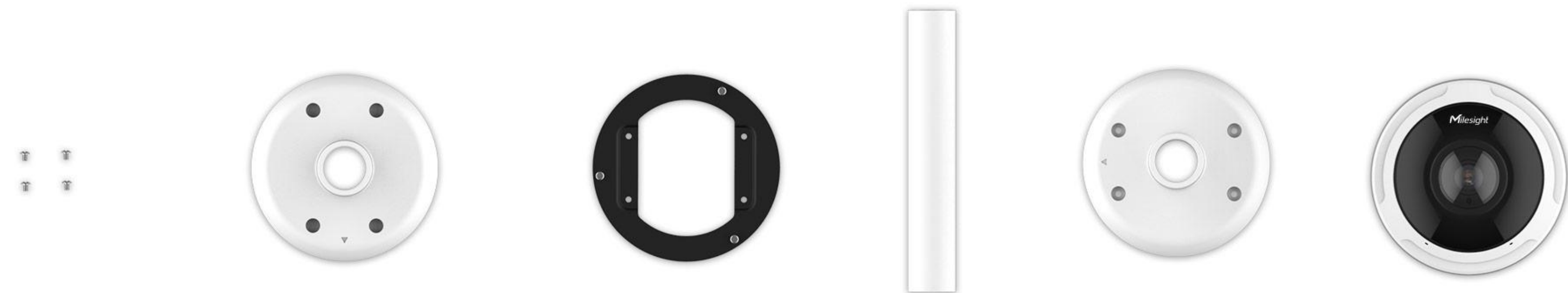
Step 5: Turn the top cover clockwise till the anchor points are aligned.



Installed with A76 Pendant Mount

Installation Environment:

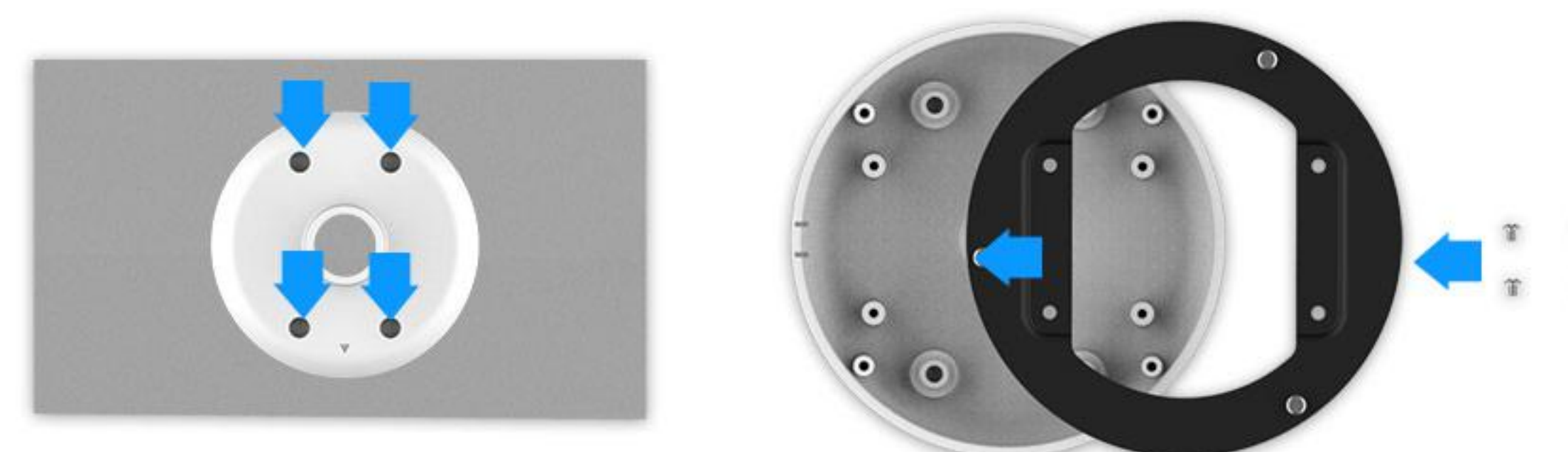
Used to install camera on a ceiling or horizontal structure.



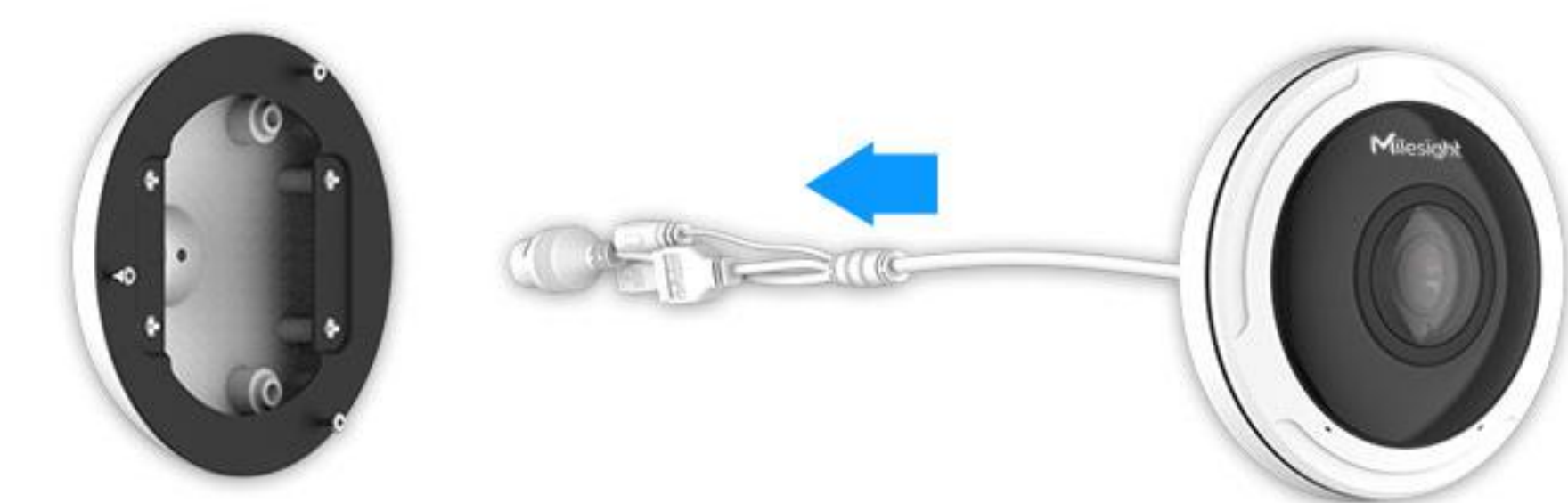
Step 1: Turn the top cover anticlockwise and take it off;



Step 2: Mark holes with the pendant head, and then drill 4 holes on the ceiling. Then Secure the bracket with pendant base;



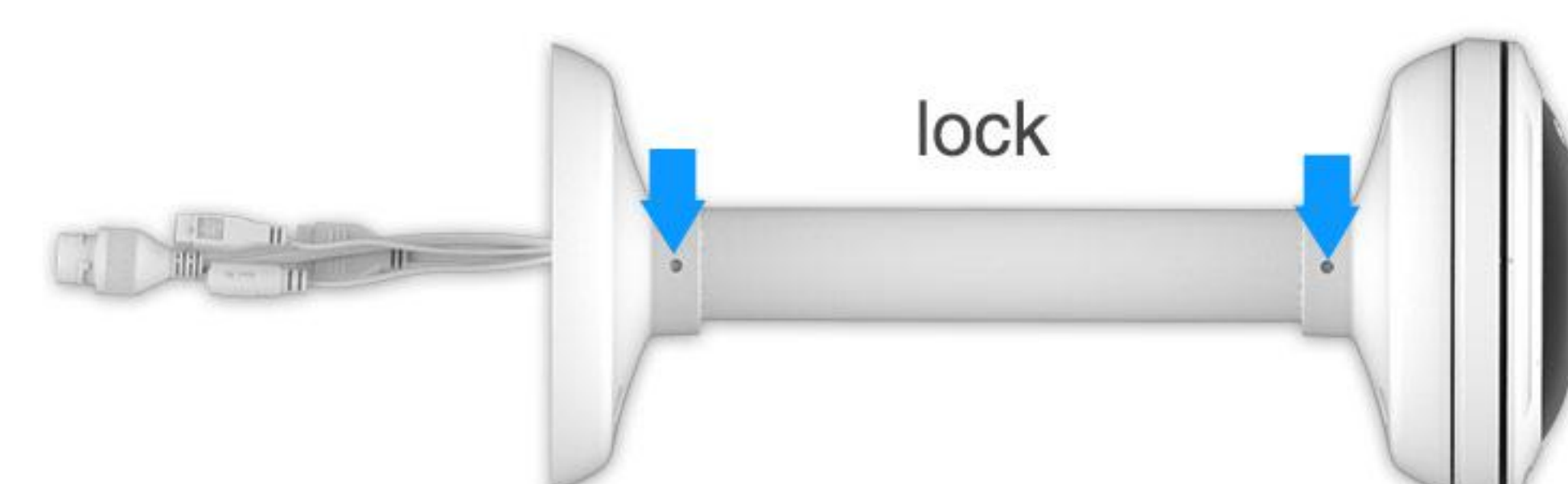
Step 3: Put the cables through the pendant base and then rotate the camera clockwise;



Step 4: Tighten set screw to fix the camera, then turn the top cover clockwise till the anchor points are aligned;



Step 5: Put the cables through the pendant pipe. And rotate it with the base and secure set screws. Put the cables through the pendant head, and rotate it with the pipe and secure set screws;



Step 6: Fix the whole pendant and camera to the drilled holes on the ceiling.



Installed with A72 Wall Mount

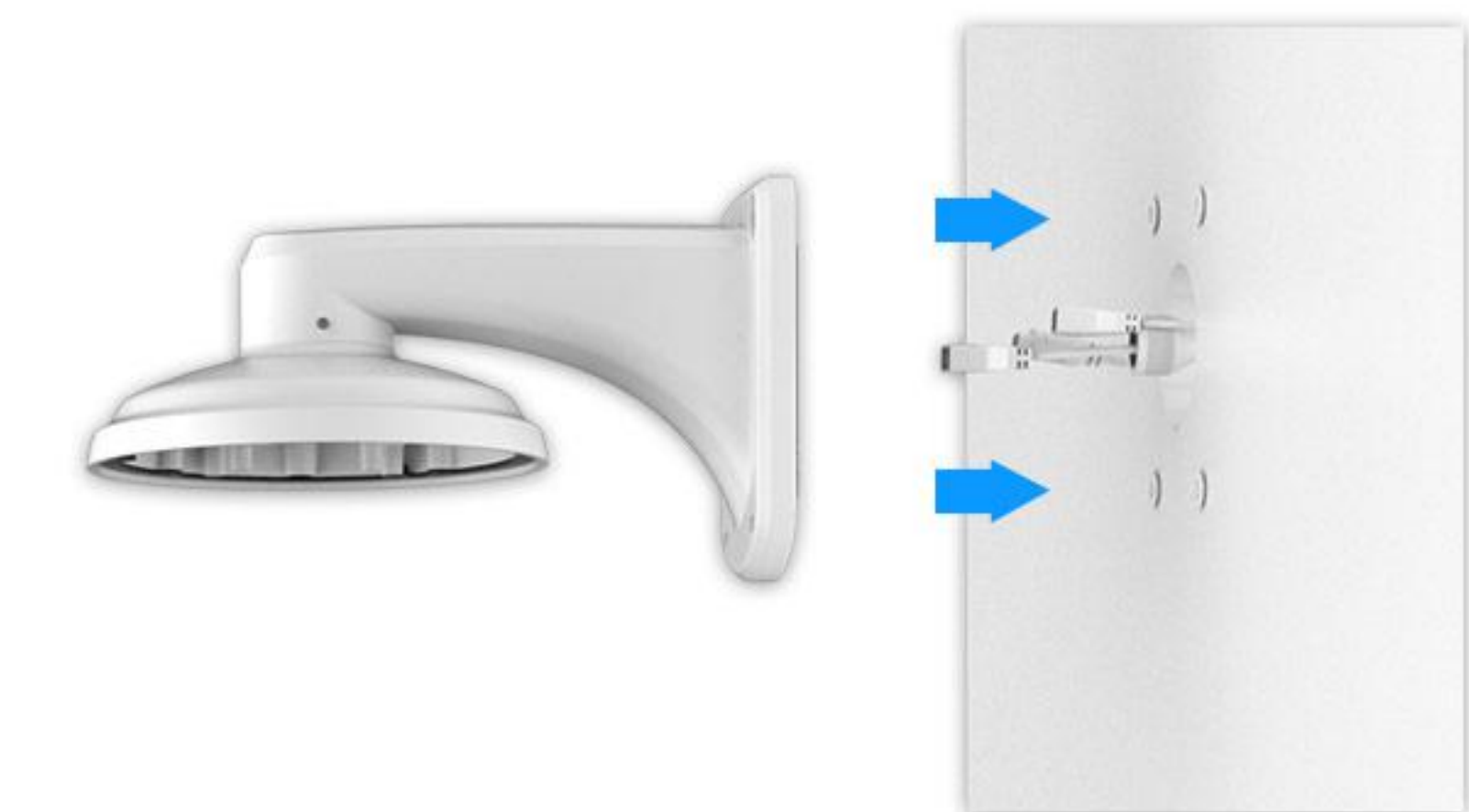
Installation Environment: For wall or parapet installations.



Step 1: Turn the top cover anticlockwise and take it off;



Step 2: Secure the screws to fix the A72 Wall Mount on the wall or parapet;



Step 3: Fix the bracket on the head of the A72 with the screws corresponding to the holes;



Step 4: Connect cables, rotate the camera to the bracket clockwise;



Step 5: Tighten the set screw. Then turn the top cover clockwise till the anchor points are aligned.



Conclusion

Supporting four different installation modes, the Fisheye Network Camera could be regarded as a true user-friendly one. Various accessories satisfy different installation requirements making the installation much more flexible and convenient.

Milesight Technology

Established in 2011, Milesight Technology is a high-tech company, specializing in design, developing and manufacture of best-in-class AIoT video surveillance solutions including Network Cameras, NVRs, Software and APP with superior image quality, exceptional flexibility and reliability for the global market. Milesight Technology markets its products through a worldwide network of distributors and resellers, offering excellent pre/after-sales and technical support services that exceed customers' expectation.

For more information about Milesight Technology, please visit our website www.milesight.com.

Milesight Technology | www.milesight.com

Contact Us: sales@milesight.com support@milesight.com



Add: 220 NE 51st Street, Oakland Park,
Florida 33334, USA
Tel: +1-800-561-0485

Add: 925, Anyang SK V1 Center, LS -ro
116beon-gil, Dongan-gu, Anyang-si, Korea
Tel: +82-31-990-7732

Add: Building C09, Software Park Phase III,
Xiamen 361024, Fujian, China
Tel: +86-592-5922772