

Supplement Light AI LPR 4X Pro Bullet Plus Network Camera

Supplement Light

AF Lens



DATASHEET



KEY FEATURES

- ▶ 0.002Lux Starlight (Deliver high detailed color images even in low light environment reaching 0.002Lux.)
- ▶ 3 in 1 Super WDR Pro (Combines 3 frames with multiple exposures to get the optimal images especially moving subjects in high contrast lighting situations)
- ▶ HLC (High Light Compensation. Improving image visibility under strong light sources.)
- ▶ Defog (Defog technology. Restoring clear images in hazy and foggy weather.)
- ▶ Versatile Interfaces (Complete interface design including Wiegand interface, Alarm I/O, Audio I/O, DC 12V, Ethernet Port and RS485 is available)
- ▶ 256G (Supporting ultra-large external microSD/SDHC/SDXC card storage up to 256G.)
- ▶ Smart Stream (Bandwidth, storage and bit rate are saved with Smart Stream On, eg, H.265+ saves 70%~80% bandwidth that of H.264.)

Clear Capture of Dynamic License Plates

Capturing high-accurate license plates of fast moving vehicles is always of the top concern in traffic monitoring. Equipped with 1/2" Starlight Sensor, 100fps high frame rate, high-quality deblur and the superior image processing algorithms, the AI LPR cameras achieve excellent capture performance at high speed and accuracy.



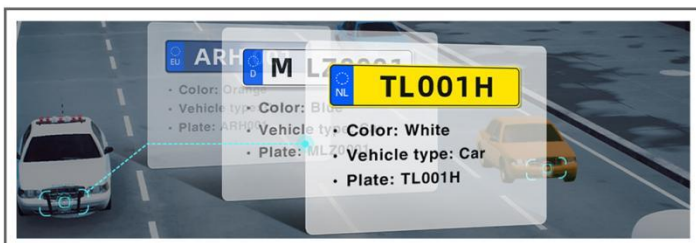
Superior Image Quality for 24/7 Traffic Monitoring

With supplement light of IR LED Light or White LED Light integrated, the AI LPR cameras deliver superior image performance and higher accuracy recognition results especially in low-light conditions. And the supplement light could turn on/off automatically, achieving a flexible way for the monitoring control.



AI-powered LPR Algorithm

Based on AI algorithm, the LPR function provides value-added data via a pre-trained deep learning model, which can not only recognize vehicle plates in real time with high accuracy, but also identify more vehicle features, like vehicle type, color, etc., generating powerful security and traffic insights.



Wiegand Protocol Supported

The Supplement Light AI LPR Camera can work with any access control system perfectly with built-in Wiegand interface, greatly expanding its usability to a wider range of application scenes.



Supplement Light AI LPR 4X Pro Bullet Plus Network Camera



Camera	Model	MS-C2866-X4TLWC (2MP)
	Image Sensor	1/2" Progressive Scan CMOS
	Min. Illumination	Color: 0.002Lux@F1.6 B/W: 0Lux with IR on
	WDR	140dB Super WDR Pro
	Shutter Time	1/100000s~1s
	Day/Night Mode	Day/Night/Auto/Customize/Schedule
	S/N	>55dB
Lens	Lens	8~32mm, 4X Optical Zoom
	Field of View	H44°~H13°/D51°~D15°/V25°~V7°
	Mount	Φ14
	Focus Control	Auto/Manual
	Aperture	F1.6-F1.7
	Iris Control	Auto
LPR	Max. Vehicle Speed	200km/h
	Recognition Accuracy	>95%
	Coverage	Support simultaneous detection of 4 regions
	White/Black List	Up to 1000 records inside the camera
	Smart Traffic Detection	License Plate Recognition, Plate Type Classification, Plate Color Recognition, Vehicle Type Classification, Vehicle Color Recognition
Illuminator	Supplement Light	IR LED Light or White LED Light
	Light Bead	9 (For IR LED Light)/6 (For White LED Light)
	Illumination Distance	Up to 40m
	Light Control	Auto/Always On/Off/Customize
Video	Max.Image Resolution	1920x1080
	Primary Stream	60Hz: 100fps@(1920x1080, 1280x960, 1280x720, 704x576) 50Hz: 100fps@(1920x1080, 1280x960, 1280x720, 704x576)
	Secondary Stream	60Hz: 60fps@(704x576, 640x480, 640x360, 352x288, 320x240, 320x192, 320x180) 50Hz: 50fps@(704x576, 640x480, 640x360, 352x288, 320x240, 320x192, 320x180)
	Tertiary Stream	60Hz: 30fps@(1920x1080, 1280x720, 704x576, 640x480, 640x360, 320x240, 320x192, 320x180) 50Hz: 25fps@(1920x1080, 1280x720, 704x576, 640x480, 640x360, 320x240, 320x192, 320x180)
	Video Compression	H.265+/H.265(HEVC)/H.264+/H.264/MJPEG
	Video Bit Rate	16Kbps~16Mbps(CBR/VBR Adjustable)
	Privacy Masking	Up to 28 areas(24 mask areas and 4 mosaic areas)
	ROI	Up to 8 areas
	Image Setting	Brightness/Contrast/Saturation/Sharpness

Supplement Light AI LPR 4X Pro Bullet Plus Network Camera

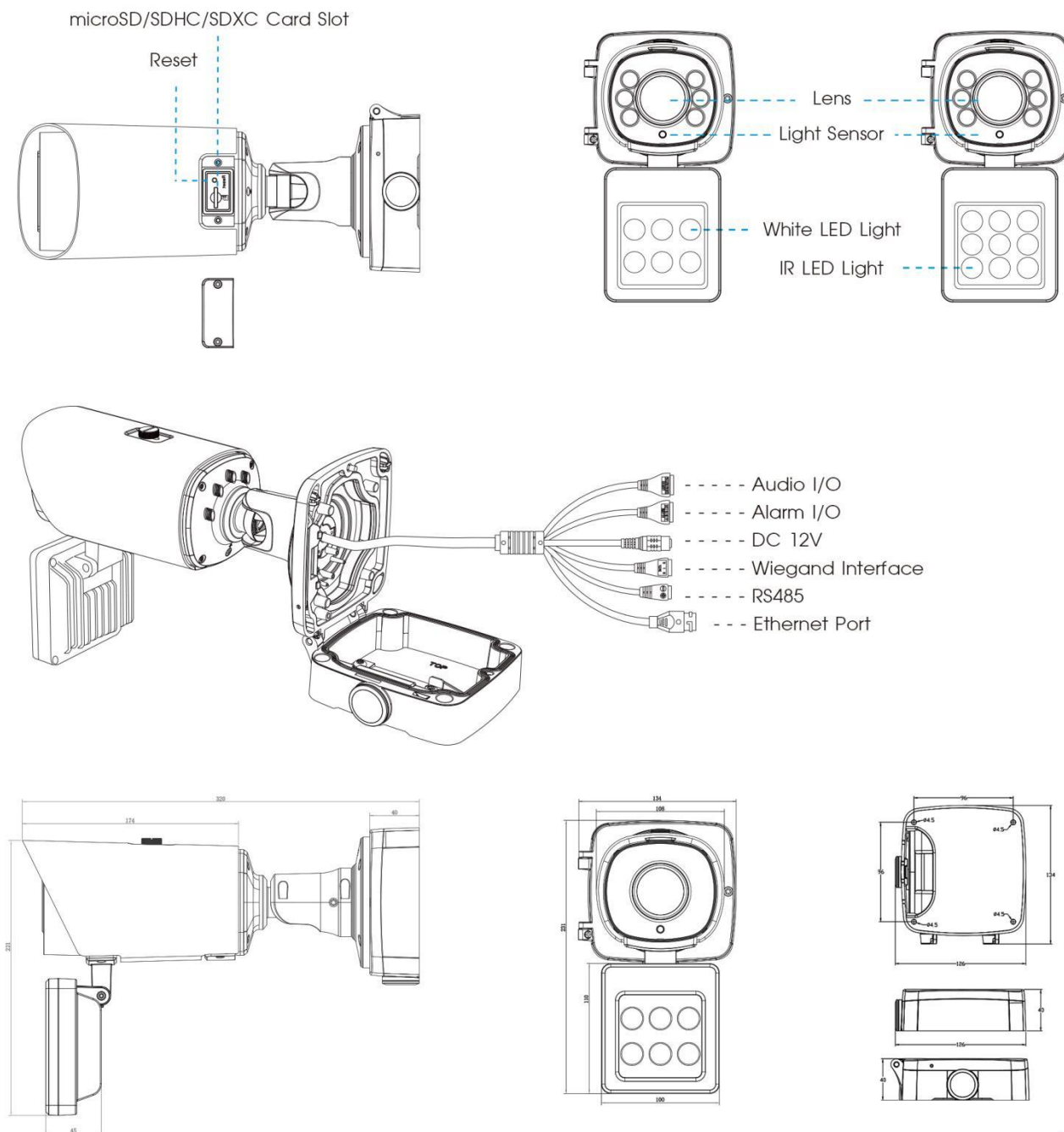


Interface	Ethernet	1*RJ45 10M/100M Ethernet Port
	Audio I/O	1/1
	Alarm I/O	1/1
	Wiegand	Standard Wiegand 26-bit
Network	Network Storage	NAS(Support NFS, SMB/CIFS), ANR
	Protocol	IPv4/IPv6, ARP, TCP, UDP, RTCP, RTP, RTSP, RTMP, HTTP, HTTPS, DNS, DDNS, DHCP, FTP, NTP, SMTP, SNMP, UPnP, Bonjour, SIP, PPPoE, VLAN, 802.1x, QoS, IGMP, ICMP, SSL
Audio	Audio Compression	G.711/AAC/G.722/G.726
	Audio Sampling Rate	8/16/32/44.1/48KHz
	Audio Bit Rate	16~256kbps
	Two-way Audio	Support
System	Storage	Support microSD/SDHC/SDXC Card Local Storage, up to 256G
	Advanced Function	BLC, HLC, 2D DNR, 3D DNR, Defog, AWB, EIS, IP Address Filtering, AGC, Anti-flicker, Corridor Mode, Deblur, Watermark
	SIP/VoIP Support	Yes, Voice & Video-over-IP
	Event Trigger	Black/White List, Motion Detection, Network Disconnection, External Input, Audio Alarm, etc.
	Event Action	FTP Upload, SMTP Upload, SD Card Record, External Output, SIP Phone, HTTP Notification, etc
	System Compatibility	ONVIF Profile G & Q & S & T, API
General	Working Temperature	-40℃~60℃
	Working Humidity	5~90%(Non-condensing)
	Power Supply	DC 12V/3A±10%
	Power Consumption	4W MAX 31W MAX (For IR LED Light) 30W MAX (For White LED Light)
	Surge Protection	4KV
	Weather Proof	Up to IP67-rated for Weather-resistant Performance
	Housing	Vandal-proof IK10-rated Metal Housing (Without Supplement Light)
	Weight	1445.8g 2100g (With Supplement Light)
	Dimensions	320mmX134mmX126mm 320mmX134mmX231mm (With Supplement Light)
	Warranty	3/5 Years

Supplement Light AI LPR 4X Pro Bullet Plus Network Camera



Structure Diagrams



Accessories Support

A62 Junction Box

Weight: 510g
Dimensions: 134*126*40mm



A01 Pole Mount

Weight: 720g
Dimensions: 170*51.5*152.6mm



A03 External Corner Bracket

Weight: 900g
Dimensions: 170*152.5*76.3mm



Milesight Technology | www.milesight.com
Contact Us: sales@milesight.com support@milesight.com

Add: 220 NE 51st Street, Oakland
Park, Florida 33334, USA
Tel: +1-800-561-0485

Add: 925, Anyang SK V1 Center, LS-ro
116beon-gil, Dongan-gu, Anvng-si, Korea
Tel: +82-31-990-7732

Add: Building C09, Software Park
Phase III, Xiamen 361024, Fujian, China
Tel: +86-592-5922772

