

# Supplement Light AI LPR Motorized Pro Bullet Plus Network Camera

NDA A

Supplement Light

Motorized Lens



DATASHEET

## KEY FEATURES

- ▶ NDA A Compliance (The fully NDA A-compliant products are well suited for government, defense and a range of projects subject to the NDA A.)
- ▶ 120dB Super WDR (Excellent performance even when the ratio of the luminosity of brightest and darkest is up to 120dB.)
- ▶ HLC (High Light Compensation. Improving image visibility under strong light sources.)
- ▶ P-Iris (Giving you a more clear scene with depth of view.)
- ▶ Versatile Interfaces (Complete interface design including Wiegand interface, Alarm I/O, Audio I/O, DC 12V and PoE is available)
- ▶ 256G (Supporting ultra-large external microSD/SDHC/SDXC card storage up to 256G.)
- ▶ Smart Stream (Bandwidth, storage and bit rate are saved with Smart Stream On, eg, H.265+ saves 70%~80% bandwidth that of H.264.)

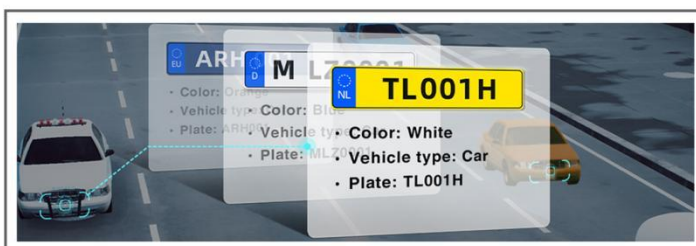
## Clear Capture of Dynamic License Plates

Capturing high-accurate license plates of fast moving vehicles is always of the top concern in traffic monitoring. Equipped with 1/2.8" Starlight Sensor, 90fps frame rate, high-quality deblur and the superior image processing algorithms, the AI LPR cameras achieve excellent capture performance at high speed and accuracy.



## AI-powered LPR Algorithm

Based on AI algorithm, the LPR function provides value-added data via a pre-trained deep learning model, which can not only recognize vehicle plates in real time with high accuracy, but also identify more vehicle features, like vehicle type, color, etc., generating powerful security and traffic insights.



## Superior Image Quality for 24/7 Traffic Monitoring

With supplement light of IR LED Light or White LED Light integrated, the AI LPR cameras deliver superior image performance and higher accuracy recognition results especially in low-light conditions. And the supplement light could turn on/off automatically, achieving a flexible way for the monitoring control.



## Wiegand Protocol Supported

The Supplement Light AI LPR Camera can work with any access control system perfectly with built-in Wiegand interface, greatly expanding its usability to a wider range of application scenes.



# Supplement Light AI LPR Motorized Pro Bullet Plus Network Camera



Camera	Model	MS-C2966-TF(I)LWPA (2MP)
	Image Sensor	1/2.8" Progressive Scan CMOS
	Min. Illumination	Color: 0.005Lux@F1.4 B/W: 0Lux with IR on
	WDR	120dB Super WDR
	Shutter Time	1/100000s~1s
	Day/Night Mode	Day/Night/Auto/Customize/Schedule
	S/N	>55dB
Lens	Lens	Motorized 2.7~13.5mm@F1.4 P-Iris(Optional)
	Field of View	H113°~H33°/D130°~D38°/V60°~V18°
	Mount	Φ14
	Focus Control	Auto/Manual
	Iris Control (Optional for I Series)	Auto/Manual
LPR	Max. Vehicle Speed	200km/h
	Recognition Accuracy	>95%
	Coverage	Support simultaneous detection of 4 regions
	White/Black List	Up to 1000 records inside the camera
	Smart Traffic Detection	License Plate Recognition, Plate Type Recognition, Plate Color Recognition, Vehicle Type Classification, Vehicle Color Recognition
Illuminator	Supplement Light	IR LED Light or White LED Light
	Light Bead	9 (For IR LED Light)/6 (For White LED Light)
	Illumination Distance	Up to 20m
	Light Control	Auto/Always On/Off/Customize
Video	Max. Image Resolution	1920x1080
	Primary Stream	60Hz/50Hz: 90fps@(1920x1080, 1280x960, 1280x720, 704x576)
	Secondary Stream	60Hz/50Hz: 90fps@(704x576, 640x480, 640x360, 352x288, 320x240, 320x180)
	Tertiary Stream	60Hz: 30fps@(1280x720, 704x576, 640x480, 640x360, 320x240, 320x180) 50Hz: 25fps@(1280x720, 704x576, 640x480, 640x360, 320x240, 320x180)
	Video Compression	H.265+/H.265(HEVC)/H.264+/H.264/MJPEG
	Video Bit Rate	16Kbps~16Mbps(CBR/VBR Adjustable)
	Privacy Masking	Up to 24 areas
	ROI	Up to 8 areas
	Image Setting	Brightness/Contrast/Saturation/Sharpness

# Supplement Light AI LPR Motorized Pro Bullet Plus Network Camera



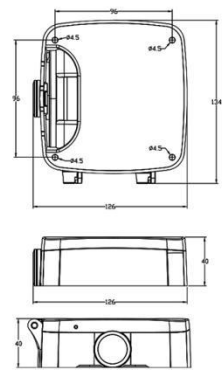
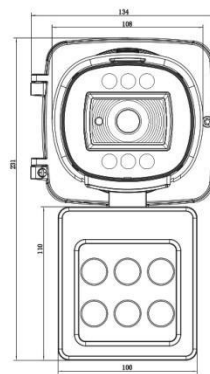
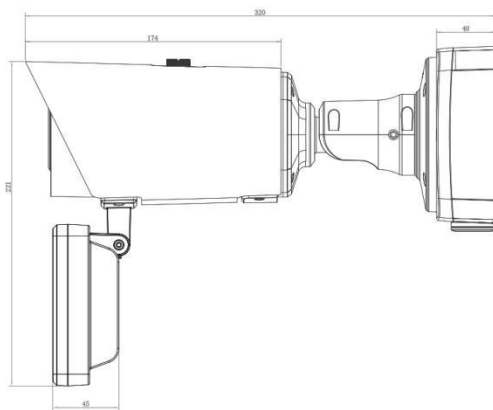
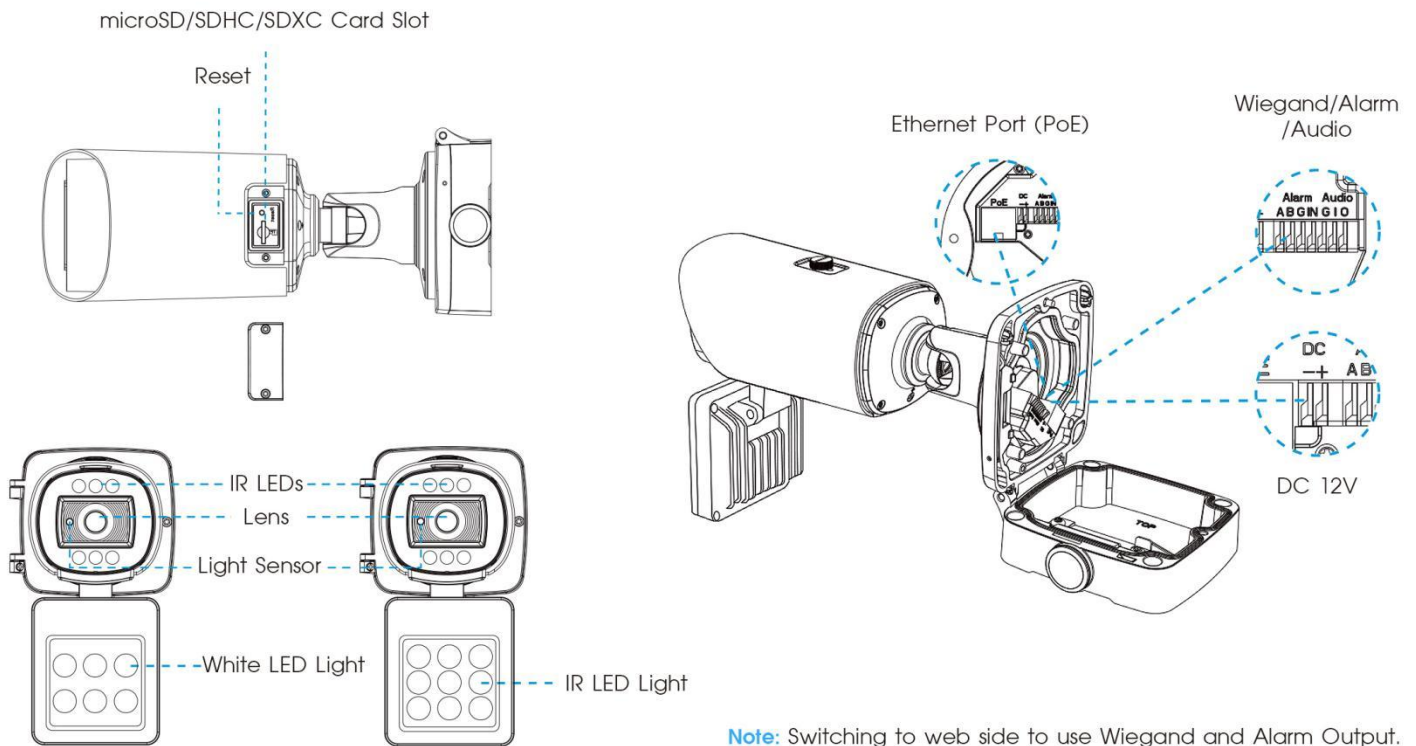
<b>Interface</b>	Ethernet	1*RJ45 10M/100M Ethernet Port
	Audio I/O	1/1
	Alarm I/O	1/1
	Wiegand	Standard Wiegand 26-bit
<b>Network</b>	Network Storage	NAS(Support NFS, SMB/CIFS), ANR
	Protocol	IPv4/IPv6, ARP, TCP, UDP, RTCP, RTP, RTSP, RTMP, HTTP, HTTPS, DNS, DDNS, DHCP, FTP, NTP, SMTP, SNMP, UPnP, Bonjour, SIP, PPPoE, VLAN, 802.1x, QoS, IGMP, ICMP, SSL
<b>Audio</b>	Audio Compression	G.711/AAC/G.722/G.726
	Audio Sampling Rate	8/16/32/44.1/48KHz
	Audio Bit Rate	16~256kbps
	Two-way Audio	Support
<b>System</b>	Storage	Support microSD/SDHC/SDXC Card Local Storage, up to 256G
	Advanced Function	BLC, HLC, 2D DNR, 3D DNR, AWB, IP Address Filtering, AGC, Anti-flicker, Corridor Mode, Deblur, Watermark
	SIP/VoIP Support	Yes, Voice & Video-over-IP
	Event Trigger	Black/White List, Motion Detection, Network Disconnection, External Input, Audio Alarm, etc.
	Event Action	FTP Upload, SMTP Upload, SD Card Record, External Output, SIP Phone, HTTP Notification, etc.
	System Compatibility	ONVIF Profile G & Q & S & T, API
<b>General</b>	Working Temperature	-40℃~60℃
	Working Humidity	0~90%(Non-condensing)
	Power Supply	PoE (802.3at) / DC 12V±10%
	Power Consumption	5W MAX
		25W MAX (For IR LED Light)
		25W MAX (For White LED Light)
	Weather Proof	Up to IP67-rated for Weather-resistant Performance
	Housing	Vandal-proof IK10-rated Metal Housing (Without Supplement Light)
	Surge Protection	4KV
	Weight	1630g
		2075g (With Supplement Light)
	Dimensions	320mmX134mmX126mm 320mmX134mmX231mm (With Supplement Light)
	Warranty	3/5 Years



# Supplement Light AI LPR Motorized Pro Bullet Plus Network Camera



## Structure Diagrams



Units: mm

## Accessories Support

A62 Junction Box (Default)

Weight: 510g  
Dimensions: 134\*126\*40mm



A01 Pole Mount

Weight: 720g  
Dimensions: 170\*51.5\*152.6mm



A03 External Corner Bracket

Weight: 900g  
Dimensions: 170\*152.5\*76.3mm



**Milesight Technology** | [www.milesight.com](http://www.milesight.com)  
Contact Us: [sales@milesight.com](mailto:sales@milesight.com) [support@milesight.com](mailto:support@milesight.com)

Add: 220 NE 51st Street, Oakland  
Park, Florida 33334, USA  
Tel: +1-800-561-0485

Add: 925, Anyang SK V1 Center, LS-ro  
116beon-gil, Dongan-gu, Anvng-si, Korea  
Tel: +82-31-990-7732

Add: Building C09, Software Park  
Phase III, Xiamen 361024, Fujian, China  
Tel: +86-592-5922772

