

Milesight

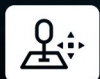
Milesight VMS Enterprise

Live View • Playback • Smart Analysis

OS: Windows 10/8/7,
Windows Server 2019/2016/2012/2008

ONVIF

H.265
HEVC



INTRODUCTION

Milesight VMS Enterprise (ONVIF compliant) is a video management software designed for medium to large projects which can manage lots of network cameras in different locations and featured with Client/Server architecture. It maintains easy usability as well as great functionality. Live view, Playback, E-map, intelligent alarm, smart ANPR, all are there for free trial.

DATASHEET

KEY FEATURES

- ▶ Support up to 2000 channels per system/128 channels per server/25 servers per system (The numbers given are recommended maximum.)
- ▶ Support multi-monitor and up to 64 live view channels per monitor with main or sub streams optional
- ▶ Support self-adaptive layout
- ▶ Support up to 64 channels synchronous or asynchronous playback
- ▶ Support quick locating & playback by tags, events
- ▶ Support split playback (Split one video into multiple clips and play them back simultaneously.)
- ▶ Support multiple kinds of overlays for exported videos
- ▶ Support local and NAS storage
- ▶ Support account management (Flexible customization of the privilege of the roles.)
- ▶ Friendly GUI for easy operation

Alarm can be triggered in real time by various events including VCA, multiple alarm actions can be enabled at the same time.

VCA



Region Entrance



Region Exiting



Advanced Motion Detection



Tamper Detection



People Counting



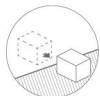
Line Crossing



Loitering



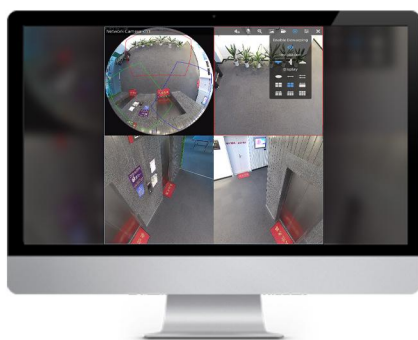
Human Detection



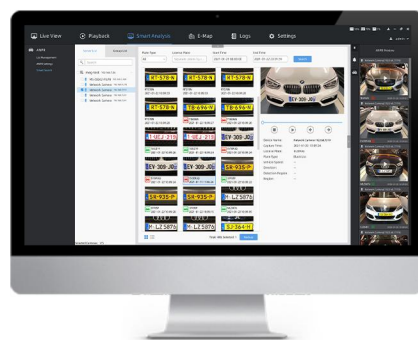
Object Left



Object Removed



Support Fisheye Dewarping in both
live view and playback



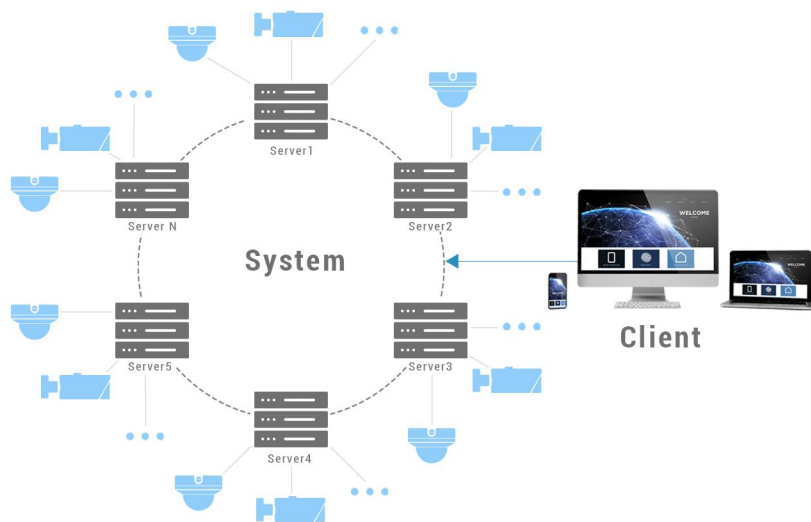
Support smart analysis like ANPR
(black/white list detection and smart search)

Milesight

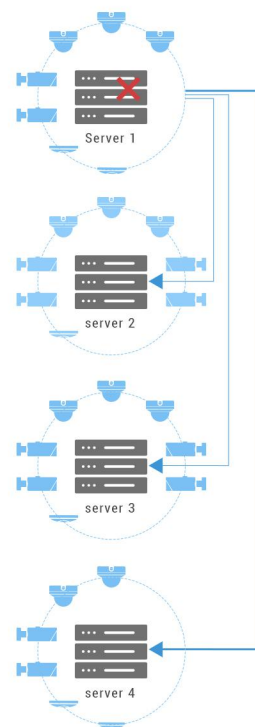
www.milesight.com



Software	Milesight VMS Enterprise	
Architecture	Client/Server architecture	
Client		
Hardware Requirement	CPU: Intel Core i5 @2.9GHz or above Memory: 4GB or above HDD: HDD/SSD GPU: Recommend, discrete graphics card will be better Graphic Memory: 2GB or more Display Resolution: 1280 x 720 or above	
OS	Windows 7/8/10	
Live View	Simultaneously Playing	Up to 64-CH, self-adaptive layout
	Multi-monitor	Live Screen, Alarm Screen, Full Screen, E-map, Playback
	Tour	Support (Camera Tour, Layout Tour)
	Function	Snapshot, Record, Audio, Talk, Digital Zoom, Fisheye Dewarping, PTZ Control, Stream Switching, Instant Playback
Device Management	Channel	Support up to 2000 channels per system/128 channels per server (The numbers given are recommended maximum.)
	Protocol	MSSP/ONVIF/RTSP/P2P/Milesight DDNS
Video/Audio Compression	Video Compression	H.265/H.264
	Audio Compression	G.711 U-Law/G.711 A-Law/AAC LC/G.722/G.726
	Video Resolution	12MP/9MP/8MP/6MP/5MP/4MP/3MP/1080P UXGA/720P/D1/VGA/CIF/QCIF
Playback and Recording Management	Playback Channel	Up to 64-CH synchronous or asynchronous playback
	Recording Type	Schedule/Event
	Playback Type	Schedule/Event/Tag
	Export Type	.mp4/.avi/.mkv/.asf/.exe (The .exe file has a built-in player.)
	Export Overlays	Text/Timestamp/Image/Privacy Mask/Transcoding
	Function	Snapshot, Audio, Digital Zoom, 1/32x~32x Slower/Faster Play Speed, Rewind Play, Fisheye Dewarping, Split Playback, Lock
Alarm	Alarm Type	External Alarm, Video Loss, Motion, Tampering, VCA Events, HDD Events, ANPR, Failover, etc.
	Alarm Action	Emergency Recording, PTZ Movement, Email, Pop up Video, Play Sound, Push Alarm to M-VMS APP, etc.
Server		
System Requirement	CPU: Intel Core i3 @2.3GHz or above Memory: 8GB or above HDD: HDD/SSD NIC: 1GB or above	
OS	Windows 7/8/10, Windows Server 2008/2012/2016/2019	
Online Clients	100	
Servers	Support up to 25 servers per system, 25 is a recommended maximum	
Performance is highly dependent on PC capacity, and the recommended configuration is just for reference.		



One system manages several servers. Every server shares the same data file.



Taken over by multiple servers simultaneously. Cameras will be allocated to servers automatically to do load balancing.

Any functioning server with failover function on and valid licenses will take over the cameras of the failed server. The cameras with record on will keep recording.

Key Functions

