



Milesight-Troubleshooting Motion Detection on Milesight NVR

Camera Version	xx.5.0.92	Update	2015.01.07
-----------------------	------------------	---------------	-------------------

1. What Is Motion Detection

Motion Detection, commonly used in unmanned surveillance video and automatic alarm. It is the process of detecting a change in the position of an object relative to its surroundings or a change in the surroundings relative to an object. When a moving object is detected, the motion detection can be used by network cameras and video encoders, and by third-party software, to, for example, record video or send a notification.



Figure 1 Motion Detection Off

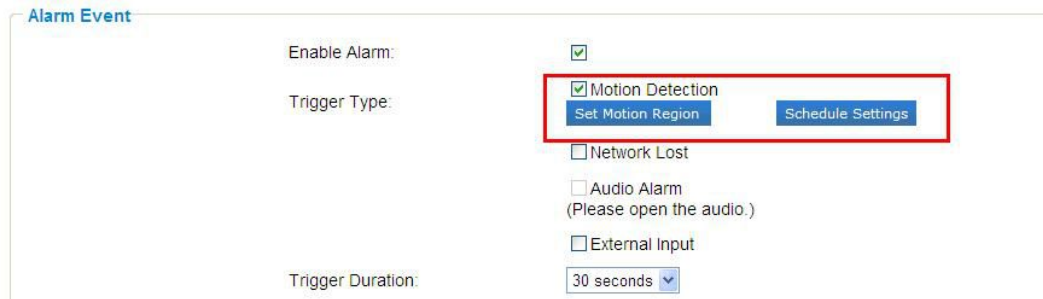


Figure 2 Motion Detection On

2. How to Set Motion Detection

Step1: Log in web, and go to “Advanced Settings” → “Alarm”;

For motion detection, you need to set the motion areas and schedule first.



Alarm Event

Enable Alarm:

Trigger Type: Motion Detection

Network Lost

Audio Alarm
(Please open the audio.)

External Input

Trigger Duration: 30 seconds

Figure 3 Motion Settings

Step2: Set motion region and choose the sensitivity;

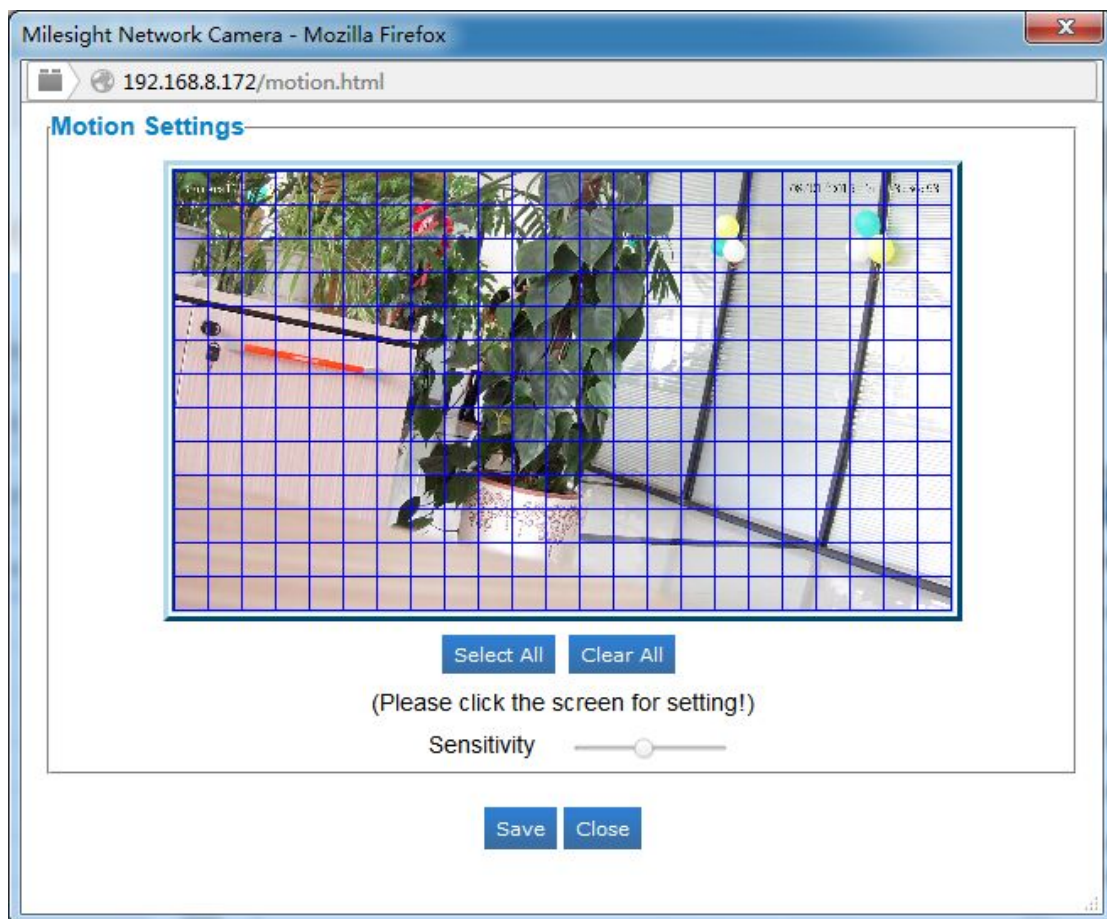


Figure 4 Motion Settings

Step3: Set the schedule for motion detection;

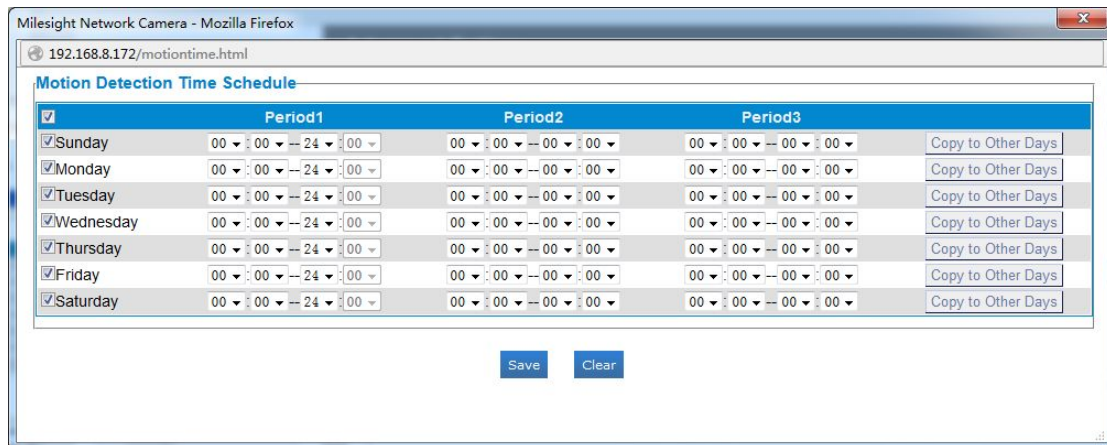


Figure 5 Motion Schedule

Step4: After setting motion detection successfully, you will see the red warning icon showed as Figure 6 on the live video page;

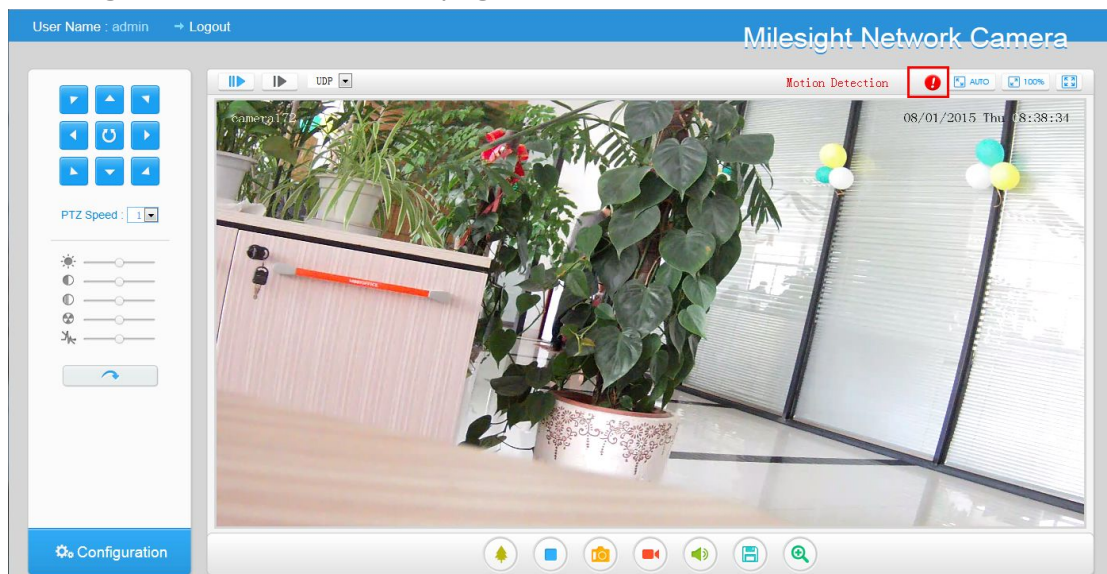


Figure 6 Motion Detection